



MIDDLETHORPE HALL & SPA YORK



National
Trust

NATIONAL TRUST

In 2008 Middlethorpe Hall,
Hartwell House and
Bodysgallen Hall were
given to the NATIONAL
TRUST to ensure their long-
term protection

Step back into a time
of elegance and
grandeur; experience
the art of quintessential
country house living at
its best, with an award
winning restaurant,
health and beauty spa,
situated in beautifully
restored gardens





17th CENTURY WILLIAM & MARY HOUSE IN THE CITY OF YORK

"'Tis a very pretty place..." wrote blue stocking diarist Lady Mary Wortley Montagu in August 1713, while residing at Middlethorpe Hall.

Located just 2 miles from York Minster and the heart of the city, Middlethorpe Hall is set in 20 acres of gardens that include manicured lawns leading to a ha-ha, interconnecting walled gardens, and parkland leading to a small lake.

Built in 1699, the restoration and conversion into a country house hotel has been carried out to historically accurate standards and decorated in the elegant manner of the 18th Century.

The hotel has the ambiance of a well-kept, well-furnished private manor house rather than a 29 bedroom hotel (ten rooms and suites in the house, and nineteen in the adjacent 18th Century courtyard).

Built for Thomas Barlow, a prosperous master cutler, Middlethorpe is influenced indirectly by the architecture of Sir Christopher Wren. Features from his Hampton Court of 1690 such as a horizontal skyline and pattern of red brick, white sash windows and stone quoins and window surrounds are taken up at Middlethorpe. The proud stone eagle above the north entrance was the Barlow family crest.



THE IDEAL BASE TO EXPLORE

Some of the FILM LOCATIONS for "*BRIDGERTON*"

The Netflix period series "*Bridgerton*" was filmed in Bath and several grand houses and estates around England, particularly in North Yorkshire. Middlethorpe Hall is the ideal base to visit some of these locations; nearby are Castle Howard* and the quiet village of Coneysthorpe.

Based on Julia Quinn's novels set in the historical epoch of the Regency era (1811-1820) in London, it portrays the story of two high-society families and their daughters, searching for a partner in the competitive marriage market. In Chapter One, Middlethorpe is mentioned when Daphne reads from an edition of Lady Whistledown's society news sheet "She gives a good account of the Middlethorpe ball".



Below: The village of Coneysthorpe in Ryedale, near Castle Howard, where Simon and Daphne are seen after their move back to Clyvedon.



Below: Castle Howard, where iconic scenes of Clyvedon Castle, Simon Hastings' home, include The Great hall, the Bedroom, Temple of Four Winds (below right), the Dairy Pond, Hallway, and Walled Garden where Daphne is assaulted by Nigel and punches him flat out.



**Castle Howard has also been used as a film location for "The Great" (Catherine of Russia), "Victoria" (early life and marriage to Prince Albert), "Barry Lyndon", "Brideshead Revisited", "The Buccaneers (1995 - four American girls go to England to find husbands)*



AN AREA OF OUTSTANDING INTEREST

Explore the Downton Abbey Experience

For Downton fans, Middlethorpe Hall is conveniently located to visit some of the places in North Yorkshire where the story centres around a royal visit to the Crawley household. Opening scenes set the 1920s mood with vintage trains, chugging and steaming. This is all done along the real-life North Yorkshire Moors Railway (*right*) heritage line in the stunning North York Moors National Park.



Below: Harewood House plays the home of Lord Lascelles, who features in the story alongside his wife, Princess Mary (the king's daughter).



The Beamish 'open-air museum' is the British, early 20th-century equivalent of Colonial Williamsburg, with an authentic bakery, candy shop and a tea room.



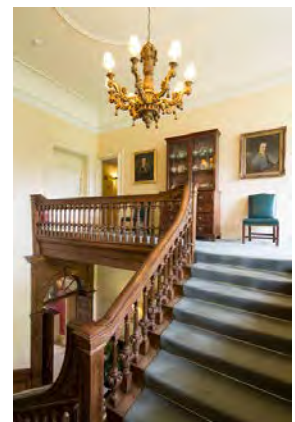


THE ELEGANT DRAWING ROOM

interconnecting with THE LIBRARY

Entering through the portico entrance at the north side to a spacious hall, that leads through to the black and white tiled stairwell hall and out to the sunny terrace. On either side of the stairwell hall are sets interconnecting rooms. To the left the Oak Dining Room, Pineapple Room and private Dining Room,

To the right of the stairwell leads into the Library (*below left*) on further to the elegant Drawing Room. All these rooms have magnificent views through the large sash windows to manicured lawns leading down to the ha-ha and beyond, where wild deer can be spotted occasionally.





THE ART OF FINE DINING AND TRADITIONAL AFTERNOON TEA

The panelled dining rooms overlooking the gardens, and the imaginative food, praised by the guide books, follows the hotel's theme of traditional excellence. There are also rooms available for private luncheon and dinner parties.

There is nothing more relaxing and indulgent than the very British ritual of a Traditional Afternoon Tea served in the elegant atmosphere of the Drawing Room or Library, with views across the lawn and gardens or in front of a cosy fire.





BEDROOMS AND SUITES

Middlethorpe Hall has 29 bedrooms and suites. These comfortable and fully equipped rooms, each decorated individually, are located in the historic hall (10) and in the attractively restored 18th century Courtyard (19) adjacent to it.





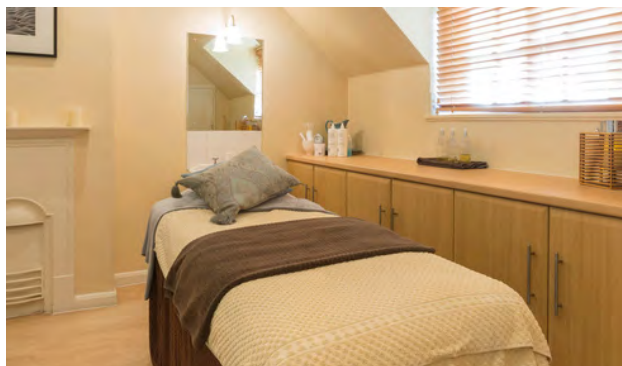
THE MIDDLETHORPE SPA

A Perfect Place to Relax and Restore

Built behind the facade of two listed Edwardian cottages, Middlethorpe Spa has three spa treatment rooms offering a variety of health and beauty treatments. On the ground floor is a cosy Club Room serving drinks and light refreshments.

There is a large indoor swimming pool looks onto an enclosed garden with sun terrace, a spa bath, steam room and sauna.

In the garden outside, in a restored Victorian summer-house is the well-equipped gymnasium.



For further information please visit our website <https://www.middlethorpe.com>

Bishopthorpe Road, York YO23 2GB T:+44(0)1904 641241

E:info@middlethorpe.com