



BODYSGALLEN HALL & SPA

NORTH WALES



National
Trust

NATIONAL TRUST

In 2008 Bodysgallen Hall,
Hartwell House and Middlethorpe
Hall were given to the
NATIONAL TRUST to ensure
their long-term protection

Step back in history and
experience the art of quintessential
country house living at its best,
with an award winning restaurant,
health and beauty spa, situated
with magnificent views across
beautifully restored gardens to
medieval Conwy Castle and
Snowdonia





STAY in a GRADE 1 17th CENTURY HOUSE set in over 200 acres of GARDENS AND PARKLAND

Bodysgallen Hall is a Grade 1 17th century house that is believed to have begun life as a watchtower during the building of Conwy Castle in the 13th century. It was not until late in the Elizabethan era, when it was owned by Richard Mostyn, High Sheriff of Caernarvonshire, that it became a residential house. Through marriage it passed to the Wynn family, and you can see a tablet on the south-west gable bearing the initials of Robert and his wife Katherine Wynn "1620 R:W:K".

Over the centuries Bodysgallen Hall has evolved from modest hamlet to a large and comfortable country house, with restored and converted outbuildings, surrounded by one of the finest Arts & Crafts gardens in Wales.

Located just 2 miles from the Victorian seaside town of Llandudno and from medieval Conwy, Bodysgallen finds itself in the heart of North Wales, an area of outstanding natural beauty, with an abundance of castles, mountains, lakes and at times, dramatic landscape, which offer inspired locations for filming.





BODYSGALLEN: THE IDEAL BASE to EXPLORE FILM LOCATIONS for "*THE SECRET GARDEN*"

The Sky Movie "*The Secret Garden*" was filmed in several locations, including Fountains Abbey and Helmsley Walled Garden in Yorkshire, and in particular, **Bodnant Garden** (National Trust) in North Wales (*10 mins drive from Bodysgallen*).

Based on Frances Hodgson Burnett's classic novel, the movie stars Colin Firth as Lord Archibald Craven, Julie Walters as Mrs Medlock, Dixie Egerick as Mary Lennox, Amir Wilson as Dickon and Edan Hayhurst as Colin Craven.

When Mary Lennox's parents die, she is sent to live with her uncle, Lord Craven, on his remote country estate in the Yorkshire moors. While exploring, she discovers a hidden magical garden.

Below: The Laburnum Arch at Bodnant Garden (National Trust) in North Wales, featured in the film. Founded in 1984, the garden overlooks the Conwy Valley, and has many highlights.



Below: Stream in Bodnant Garden where the children splash about in The Secret Garden.



Continue your trail to visit The Secret Garden film locations by staying at Middlethorpe Hall, our companion hotel, from where you can visit Helmsley Walled Garden and Fountains Abbey.



Stay at MIDDLETHORPE HALL & SPA

More film locations for "*THE SECRET GARDEN*"

Middlethorpe Hall is the perfect base as it is conveniently located to visit some of the film locations in North Yorkshire where the story features the titular garden that Lord Craven has locked up after his wife's death.



Above: Duncombe Park in North Moors National Park, a 18th-century estate with gardens, including a serpentine terrace and dreamy views.



Above & below: The ruins of Fountains Abbey, a World Heritage Site being a well-preserved Cisterian monastery, full of follies, statues and reflecting pool adding to the childlike wonder of the film.



Left: Nestled in North Yorkshire's moors is Helmsley Walled Garden, a historic five-acre garden, built in the mid-18th century, situated beneath the ruins of Helmsley Castle.



RELAX IN ROOMS FILLED WITH HISTORY

Bodysgallen has a noble history - the name 'Bodysgallen' may mean either 'house among thistles' or 'the abode of Cadwallon', a 6th century chieftain.

Here you will find the 17th century coats of arms of the Mostyns, Wynns and Vaughans on the fireplace, and also in the stained glass windows in the Dining Room and stairwell.

Enter the main house into the oak panelled main hall (below) and above it the Drawing Room (*above*) and you feel transported through history, albeit with every modern day comfort.

The elegant Library is located on the ground floor and has a relaxed ambience; a peaceful haven with an open fire lit in colder months, and with views out to the front gardens.





THE ART OF FINE DINING AND TRADITIONAL AFTERNOON TEA

Renowned for fine dining, imaginative menus using local produce and seasonal fruit and vegetables grown in Bodysgallen's potager garden, the Dining Rooms have been awarded 3 AA Rosettes. The Dining Rooms overlook the gardens and are the perfect setting for enjoying breakfast, lunch and dinner.

There is nothing more relaxing and indulgent than the very British ritual of a Traditional Afternoon Tea served in the elegant atmosphere of the Drawing Room or Library, in front of a cosy fire or on warm summer days outdoors on the terrace with magnificent views across the award-winning gardens.



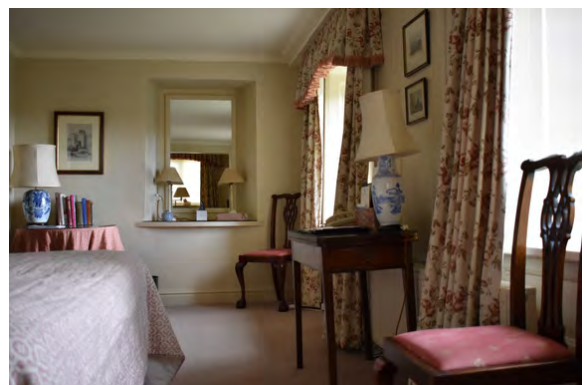


PRINCIPAL SUITES, BEDROOMS, AND COTTAGE SUITES

The hotel has the relaxed ambiance of a well-kept, well-furnished private manor house rather than a 31 bedroom hotel. With eleven rooms and four principal suites in the Hall, and sixteen cottage suites nestling in the gardens near the Hall and the Spa, all are individually furnished in a traditional country house style with antiques and fine prints, and have all the modern comforts you would expect to find in a world class hotel.



View across the gardens to Conwy Castle and Snowdonia mountain range





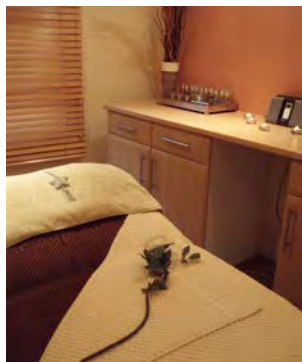
THE BODYSGALLEN SPA

A Perfect Place to Relax and Restore

Take a short walk from the hotel, you will find the health and beauty Spa, housed in a former, restored and converted farm house. It has six treatment rooms with professional beauty consultants offering a range of aromatherapy and holistic treatments.

There is a large indoor swimming pool, beside which are loungers, spa bath, steam room and sauna. A fully equipped, air-conditioned gymnasium overlooks the pool.

The Spa Club Room with sun terrace offers a variety of light refreshments and beverages.



For further information please visit our website <https://www.bodysgallen.com>

The Royal Welsh Way, Llandudno LL30 1RS T:+44(0)1492 584466

E:info@bodysgallen.com