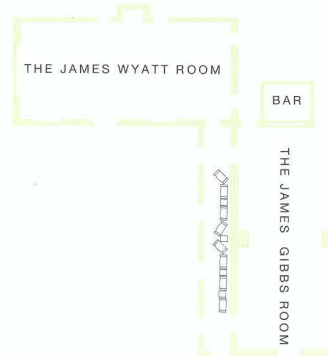
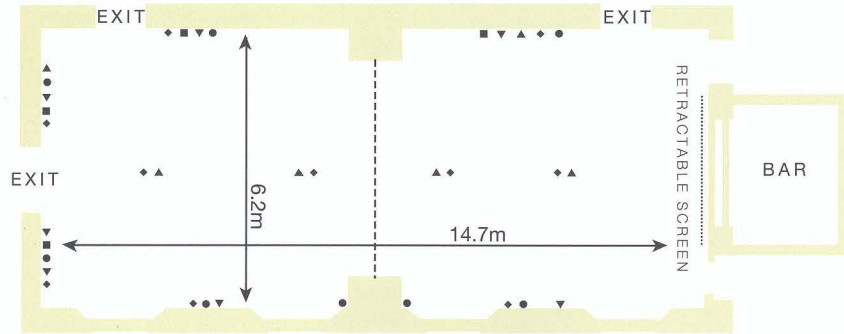


THE HARTWELL ROOMS

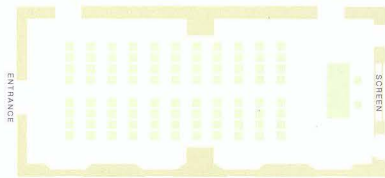
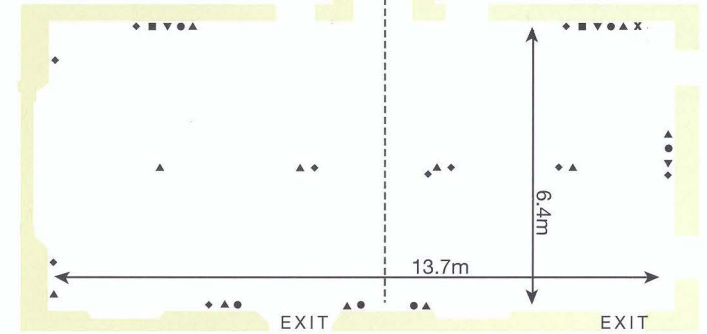
THE JAMES GIBBS ROOM

- RETRACTABLE DIVIDING WALL
- 2 AMP SOCKET
- FAX
- ▼ TELEPHONE
- ▲ TV
- ◆ DOUB LE 13 AMP SOCKET



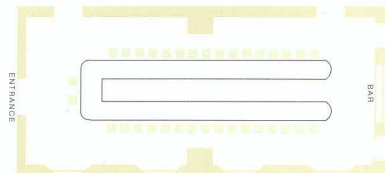
THE JAMES WYATT ROOM

- RETRACTABLE DIVIDING WALL
- 2 AMP SOCKET
- FAX
- ▼ TELEPHONE
- ▲ TV
- ◆ DOUB LE 13 AMP SOCKET
- ✕ ISDN2a LINE FOR VIDEO CONFERENCING

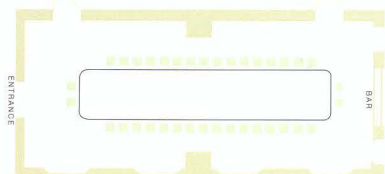


**THEATRE
STYLE**
Seating for 90
(maximum)

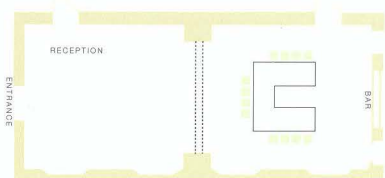
**JAMES GIBBS
CONFERENCE EQUIPMENT**
Twin 35mm Kodak carousel with
eclipse dissolve control
8' x 6' projection screen
VHS and U-matic video systems
Multi-channel television
Sound system with voice
enhancement/reinforcement, cassette
deck, hand-held microphone and
lapel radio microphones
'Multiscene' lighting control and
window blackout
Infra-red hand-held Presentation
Room remote control
Overhead projector
Computer graphics
Photocopier
Dedicated Fax



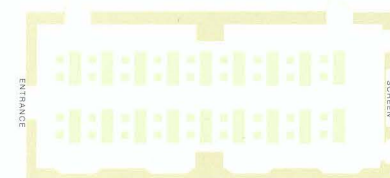
**U-SHAPE
STYLE**
Seating for 34
(36 maximum)



**BOARDROOM
STYLE**
Seating for 36
(40 maximum)

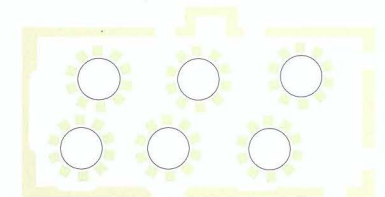


**DIVIDED
ROOM
U SHAPE**
Seating for 12

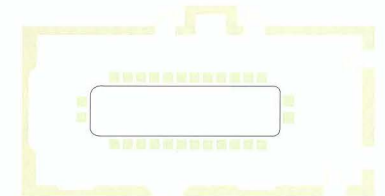


**CLASSROOM
STYLE**
Seating for 36
(maximum)

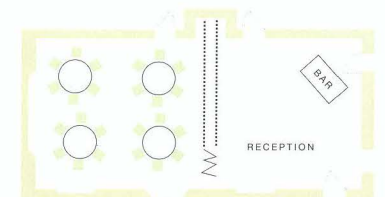
**PRIVATE
DINING**
Seating for 60
(maximum)



**PRIVATE
DINING**
Seating for 28
(34 maximum)



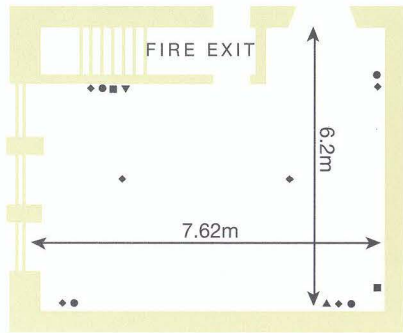
**PRIVATE
DINING**
Seating for 24
(maximum)



THE HARTWELL ROOMS

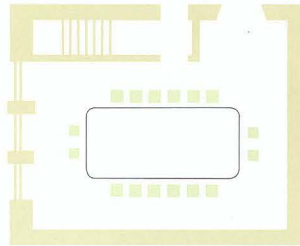
THE ERIC THROSSELL BOARDROOM

- 2 AMP SOCKET
- FAX
- ▼ TELEPHONE
- ▲ TV
- ◆ DOUB LE 13 AMP SOCKET



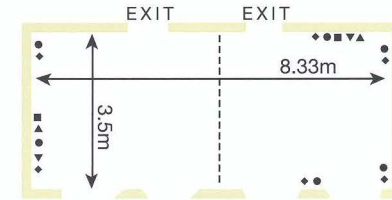
BOARDROOM STYLE

Seating for 16
(maximum)



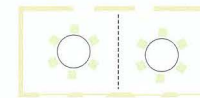
THE HENRY KEENE ROOM

- RETRACTABLE DIVIDING WALL
- 2 AMP SOCKET
- FAX
- ▼ TELEPHONE
- ▲ TV
- ◆ DOUB LE 13 AMP SOCKET



BOARDROOM STYLE

Seating for 12
(maximum)



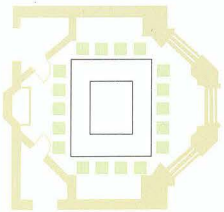
SYNDICATE STYLE

Seating for 6
(maximum)

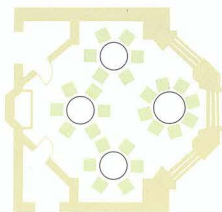
Private dining in the house

THE OCTAGON ROOM

Seating for 18
(maximum)

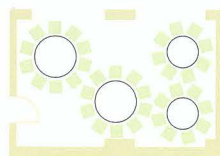


Seating for 26
(maximum)



THE DORIC ROOM

Seating for 36
(maximum)



Seating for 26
(maximum)

