



# MIDDLETHORPE HALL

Hotel, Restaurant and Spa

York

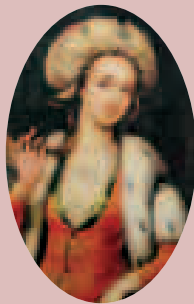


AN HISTORIC HOUSE HOTEL OF THE  National Trust



*“Tis a very pritty place... I think there is nothing to  
be done but to send an immediate  
Note to Mr. Harrison to let him know I will be at  
Middlethorpe with my family Tuesday next.”*

LADY MARY WORTLEY MONTAGU, AUGUST 1713



Lady Mary Wortley Montagu

PAST, PRESENT AND FUTURE PERFECT





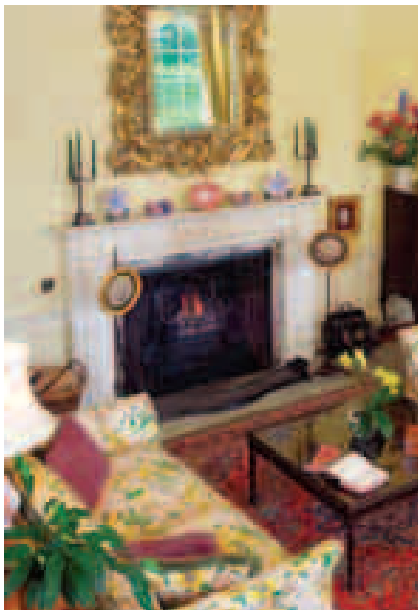
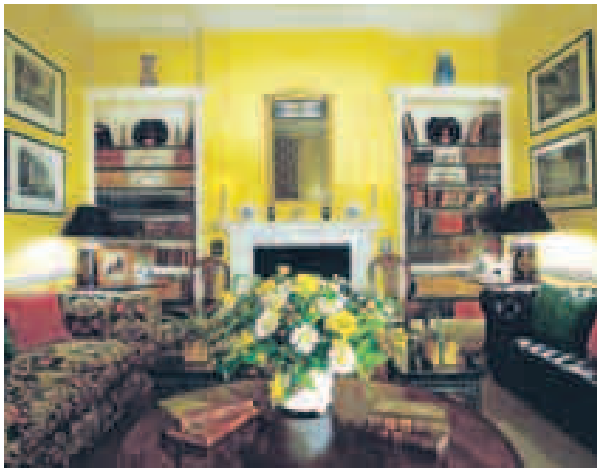
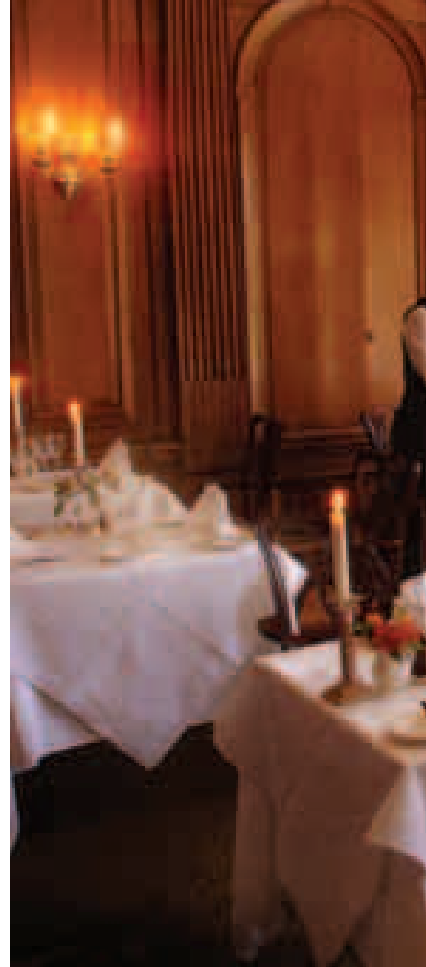
Middlethorpe Hall, York, is a William III country house close to the city set in 20 acres of its own gardens and parkland. Built in 1699, it was once the home of the famous diarist, Lady Mary Wortley Montagu.

After a period of neglect, the Hall was sympathetically restored by Historic House Hotels Limited with decorations, antiques and fine pictures carefully chosen as consistent with the period of the house. The gardens and parkland have also been restored and include ha ha's, a white garden, a walled garden, a small lake and some beautiful specimen trees. The Hall was donated to the National Trust in September 2008.

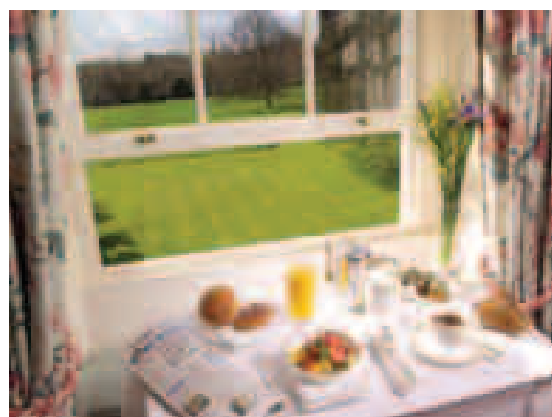
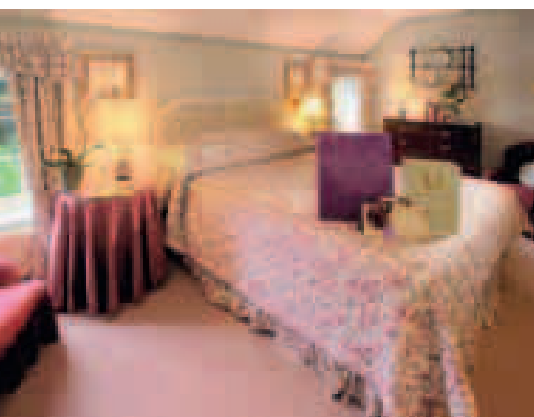


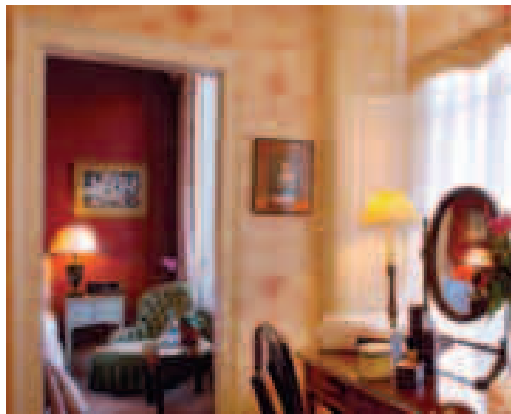
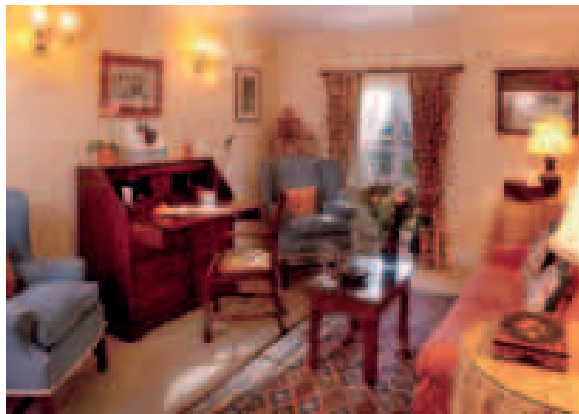


The panelled dining rooms overlooking the gardens and the imaginative food, much praised in all the guide books, follows the hotel's theme of traditional excellence. There are two rooms available for private luncheon and dinner parties.



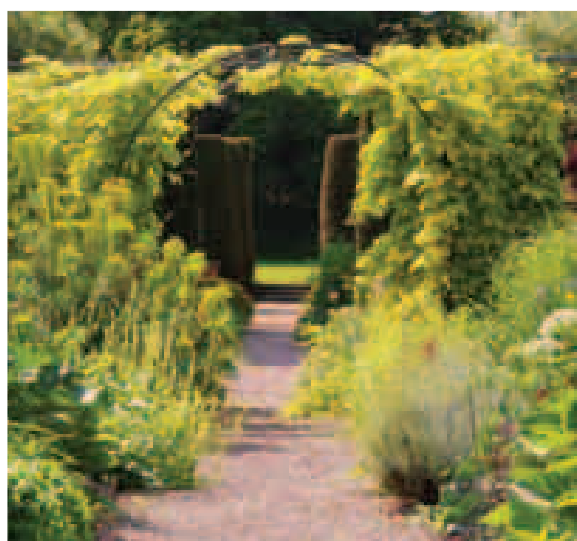


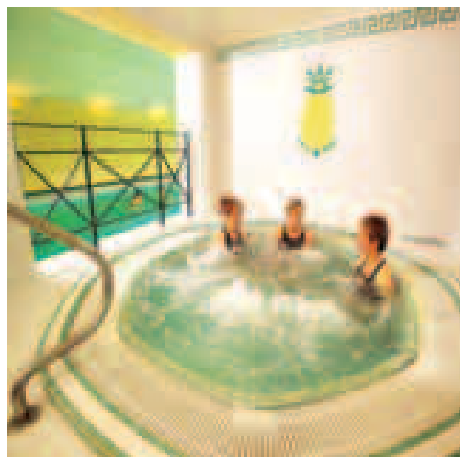
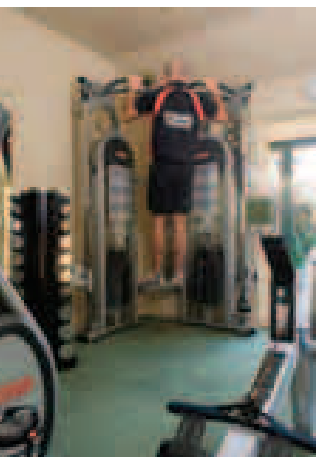




The comfortable and fully equipped bedrooms, each decorated individually, are both in the house and in the attractively restored 18th century courtyard next to it.









A Health and Fitness Spa is located opposite the hotel in a subtly extended pair of Edwardian cottages. It contains a large swimming pool, spa bath, steam room, sauna and Club Room where meals and drinks are served.

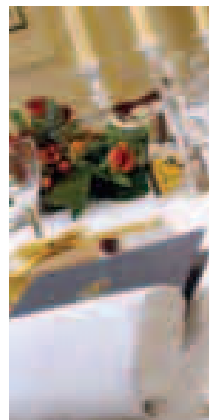
The Spa also has three beauty salons with qualified therapists providing the latest treatments using Decléor, ESPA, Caci Quantum and Jessica products, and is able to advise clients on the treatments which they will find most beneficial. There is a programme of health and beauty days and half days, and a range of products is available for sale.

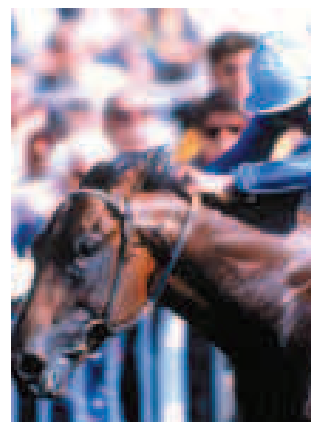
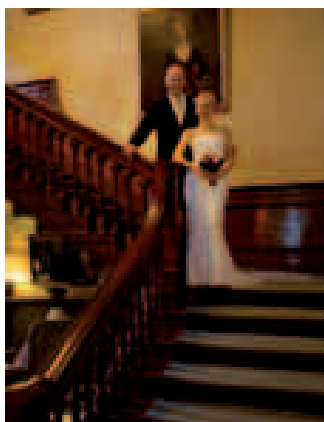
Hotel guests have unlimited use of the Spa during their stay at Middlethorpe Hall. Guests can also play croquet in the gardens; there are several golf courses locally and riding can be arranged nearby.





There is also a small conference centre, known as the Barlow Room, with its own kitchens, ideal for meetings, receptions, exhibitions and private entertaining.

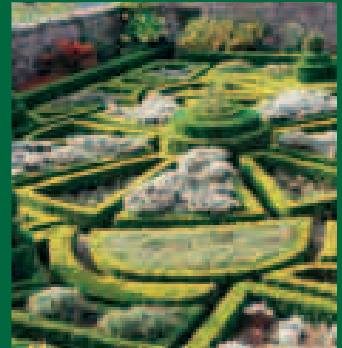
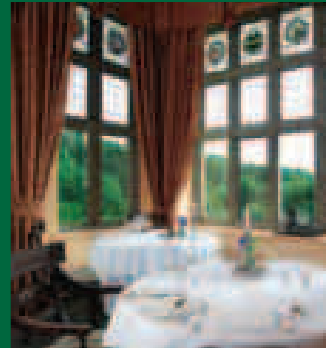
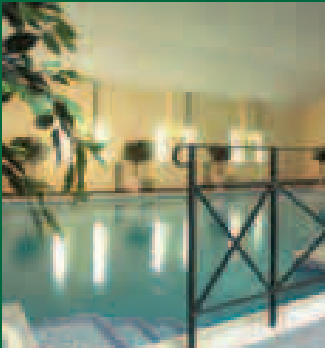






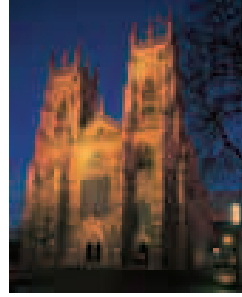
## BODYSGALLEN HALL AND SPA

Bodysgallen Hall, built in the 17th century, is a delightful country house hotel standing in 200 acres of gardens and parkland with magnificent views of Snowdonia and nearby Conwy Castle. The well equipped health and fitness Spa includes a spacious indoor swimming pool, making Bodysgallen an ideal place for a totally relaxed visit.







Castle Howard

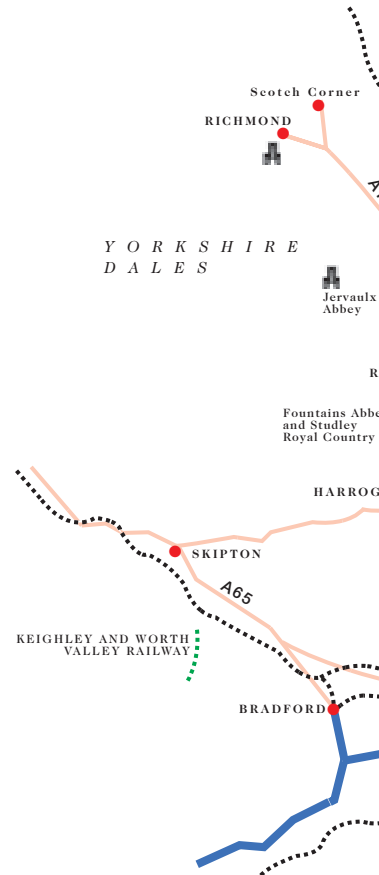


York Minster



Middlethorpe Hall, overlooking York racecourse, is an obvious choice for the racegoer, and is only a mile and a half from York railway station and the City - one of Britain's most historic, and still surrounded by its medieval city walls. They contain some of the most splendid urban architecture in the British Isles, including the Minster, The Treasurer's House , Fairfax House, a beautifully restored Georgian town house, the medieval street of The Shambles, the Castle and its outstanding museum, and a profusion of other fascinating buildings and museums (including the National Railway Museum which contains the world's fastest steam locomotive and a splendid collection of royal railway carriages).

Yorkshire is full of romantic and historic places, such as the ruined abbeys of Fountains, Rievaulx and Jervaulx; country houses like Castle Howard, Newby, Sledmere and Beningbrough ; towns like Richmond, Helmsley, Whitby and Scarborough. The countryside is renowned for the beauty of the Yorkshire Dales, and the open splendours of the North York Moors, the Howardian Hills and the exciting coastal scenery. Middlethorpe Hall is placed centrally within easy reach of all of these.





North Yorkshire Moors Railway



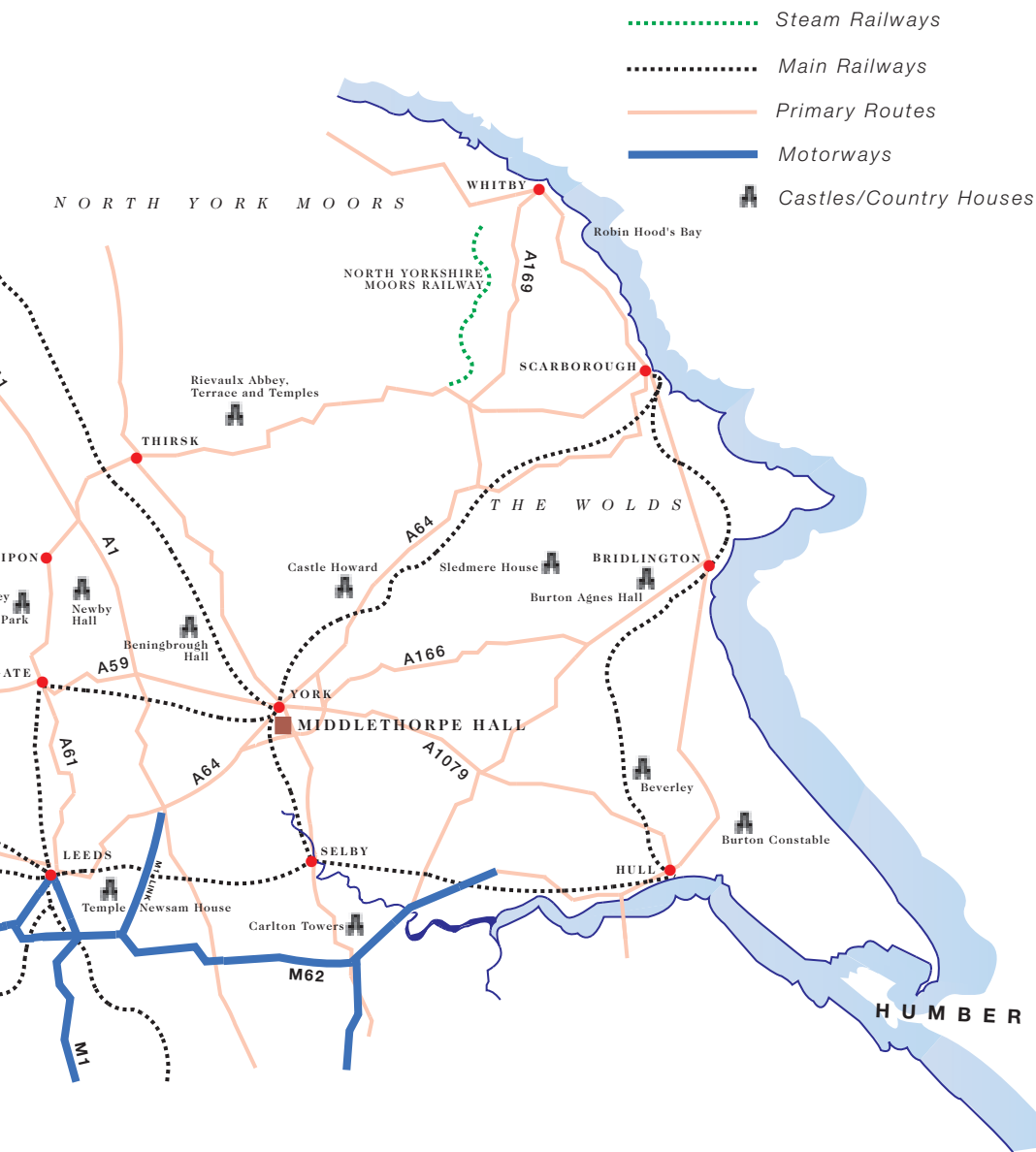
Rievaulx Abbey



Horse Racing at the Knavesmire



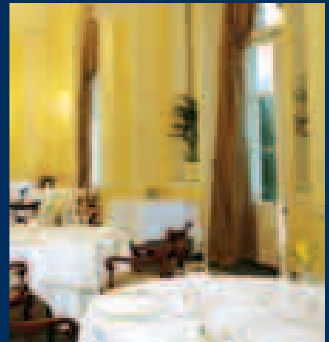
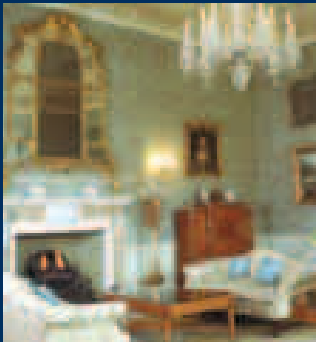
The City of York





## HARTWELL HOUSE AND SPA

Hartwell House in the Vale of Aylesbury is one of Buckinghamshire's most celebrated country houses, and was the home in exile of King Louis XVIII of France from 1809 to 1814. As an hotel it has several magnificent reception rooms and 47 bedrooms and suites equipped to very high standards. The adjacent coach houses have been restored to provide an indoor swimming pool, health and fitness Spa and extensive meeting rooms.



# HOW TO TRAVEL TO MIDDLETHORPE HALL & SPA

**By road:** Take the A64 (T) off the A1 (T) near Tadcaster, follow the signs to York West, then follow the smaller signs to Bishopthorpe, then Middlethorpe.

**By rail:** The nearest station is York to which there is an excellent and very fast train service from London, Edinburgh and most parts of Britain. The journey from London takes only 1 hour 50 minutes.

**By Air:** Manchester International Airport is just 1½ hours drive. Leeds International is a 45 minute drive.

We welcome children over the age of six years in the hotel, and over eight in the Spa at set swimming times.

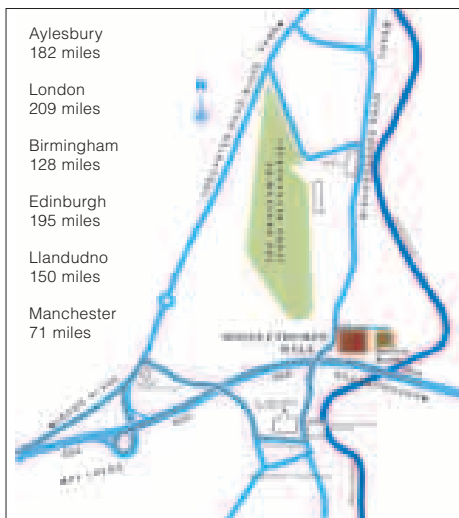
Dogs are welcomed in the cottage and garden suites only, by prior arrangement, two small dogs or one larger dog, and may be walked in the park and woods, but not in the garden. Damage to room will be charged for. Guide dogs are welcome.

In deference to the wishes of the majority of our guests, the use of mobile telephones and computers is not permitted in public rooms.

For those wishing to have a meeting involving several people and extensive paper, private rooms may be available.

It may be helpful for guests wishing to settle the account with the hotel that we do not accept Diners or private cheques.

To comply with the legislation and in the interest of the majority of our guests and the safety of historic Middlethorpe Hall, all rooms and bedrooms have been designated non-smoking.



- 2009 – Yorkshire in Bloom – Gold Award  
2008 – Condé-Nast Johansens – Outstanding Service Award  
2008 – Visit York – Hotel of the Year  
2007 – Michelin Guide – Particularly pleasant hotel  
2007\* – 2AA Rosettes for Food  
2006 – Visit York – Hotel of the Year  
2006\* – Automobile Association ★★★★★  
\* Also awarded in successive years.

## How to Make a Reservation

From within the UK - by phone 01904 641241 – by fax 01904 620176

From overseas - by phone +44 1904 641241 – by fax +44 1904 620176

By e-mail: [info@middlethorpe.com](mailto:info@middlethorpe.com)

## Travel Agents GDS Access Codes

Apollo/Galileo: YX14942

Worldspan: YXGB17

Sabre: YX4540

Amadeus YXQQYTHO



## MIDDLETHORPE HALL & SPA

Bishopthorpe Road York YO23 2GB England  
Telephone: 01904 641241 Fax: 01904 620176

E-mail [info@middlethorpe.com](mailto:info@middlethorpe.com)

[www.middlethorpe.com](http://www.middlethorpe.com)

[www.historichousehotels.com](http://www.historichousehotels.com)

